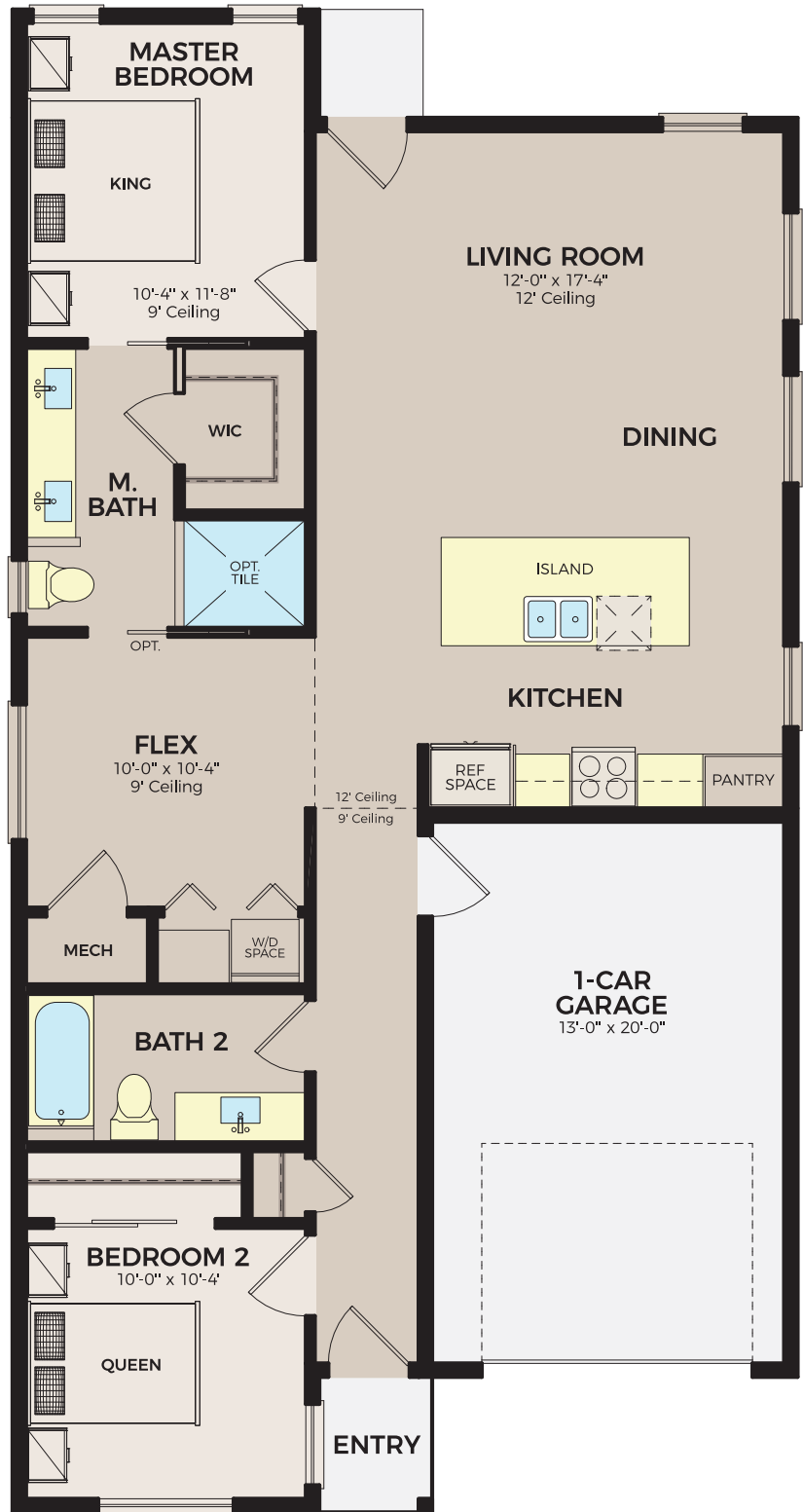


PINOT NOIR



Pinot Noir Floor Plan:

- 1-Story // 1,185 Sq. Ft.
- 2 Bedrooms
- 2 Bathrooms
- Flex Room
- 1-Car Garage
- Block 2, Lot 3**



ActiveWest reserves the right to change floor plans, specifications, designs, and prices without notice.

Square footage is approximate. Information is deemed reliable but is not guaranteed and should be verified by the buyer.

MERLOT



Merlot Floor Plan:

- 1-Story // 1,310 Sq. Ft.
- 2 Bedrooms
- 2 Bathrooms
- Flex Room
- 2-Car Garage
- Block 2, Lot 4



ActiveWest reserves the right to change floor plans, specifications, designs, and prices without notice. Square footage is approximate. Information is deemed reliable but is not guaranteed and should be verified by the buyer.

CABERNET



Cabernet Floor Plan:

- 1-Story // 1,220 Sq. Ft.
- 2 Bedrooms
- 2 Bathrooms
- 2-Car Garage
- Block 2, Lot 5



ActiveWest reserves the right to change floor plans, specifications, designs, and prices without notice. Square footage is approximate. Information is deemed reliable but is not guaranteed and should be verified by the buyer.

SYRAH



Syrah Floor Plan:

- 1-Story // 1,375 Sq. Ft.
- 2 Bedrooms
- 2 Bathrooms
- Flex Room
- 2-Car Garage
- Block 2, Lot 2



ActiveWest reserves the right to change floor plans, specifications, designs, and prices without notice. Square footage is approximate. Information is deemed reliable but is not guaranteed and should be verified by the buyer.

GRENACHE



Grenache Floor Plan:

- 1-Story // 1,553 Sq. Ft.
- 2 Bedrooms
- 2 Bathrooms
- Flex Room
- 2-Car Garage
- Block 1, Lot 1-6 & Block 2, Lot 1**

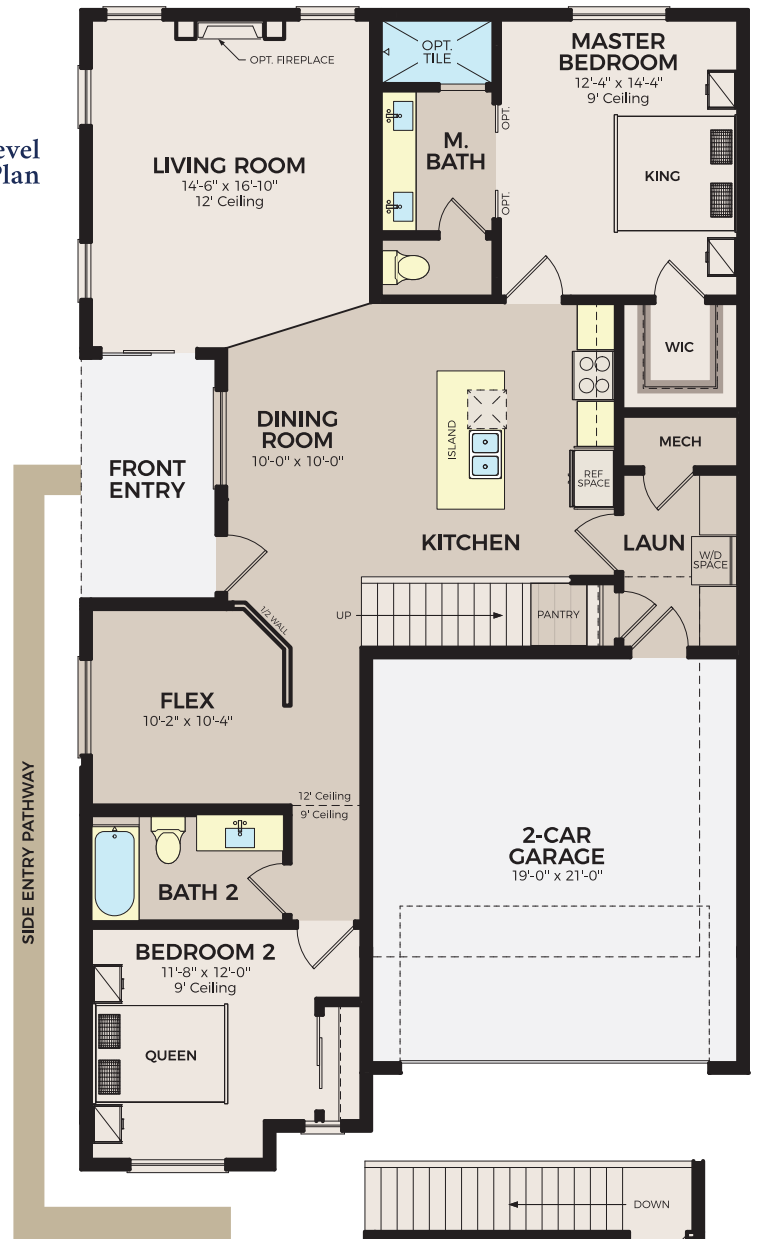


ActiveWest reserves the right to change floor plans, specifications, designs, and prices without notice.

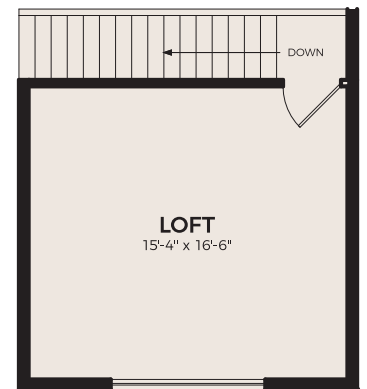
Square footage is approximate. Information is deemed reliable but is not guaranteed and should be verified by the buyer.

Lower Level Floor Plan

MALBEC



Upper Level Floor Plan



Malbec Floor Plan:

- 2-Story // 1,743 Sq. Ft.
- 2 Bedrooms
- 2 Bathrooms
- Flex Room
- Loft
- 2-Car Garage
- Block 1, Lot 1-6 & Block 2, Lot 1

ActiveWest reserves the right to change floor plans, specifications, designs, and prices without notice. Square footage is approximate. Information is deemed reliable but is not guaranteed and should be verified by the buyer.